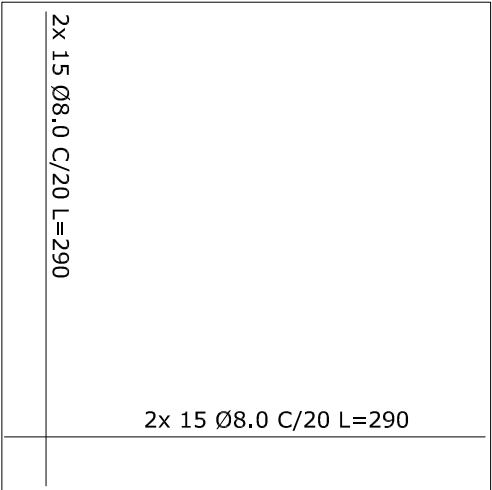
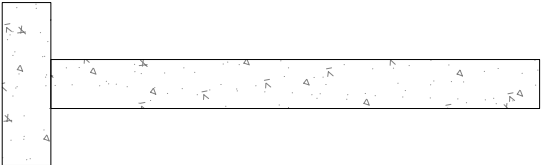


CORTINA DE CONCRETO ARMADO



PROPRIETÁRIO

PREFEITURA MUNICIPAL DE IBARAMA - RS

Rua Júlio Brädi, 523 - Ibarama / RS - (51) 3744 - 1112

FRANCAK

2/3

OBRA: ENFEREJO:

BRAÇO DE CABECEIRA DE PONTE (PADRÃO)

Diversos logradouros - Ibarama - RS

ESCALAS:
SEM ESCALA

DATA:
MAIO / 2024

ABEK

VALMOR NERI MATTANA

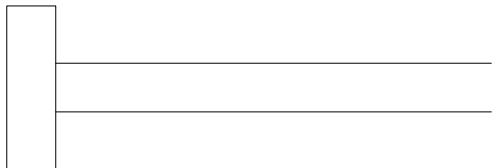
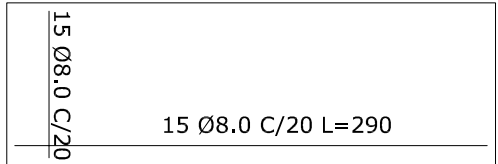
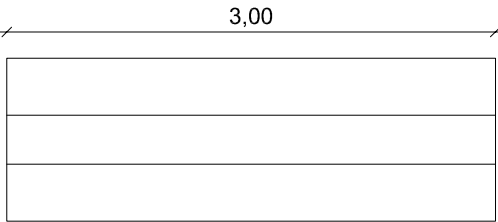
PREFEITO MUNICIPAL

LEÔNIDAS LAZZARI JÚNIOR

ENG.º CIVIL (CRE-PRS: 13903)

DESENHO:

ENG.º LEÔNIDAS



FUNDAÇÃO